

P4

TIG - With or without filler wire

Portable power source for orbital tube welding

 Ready 4.0 - Smart factory



POLYSOUDE
THE ART OF WELDING

P4

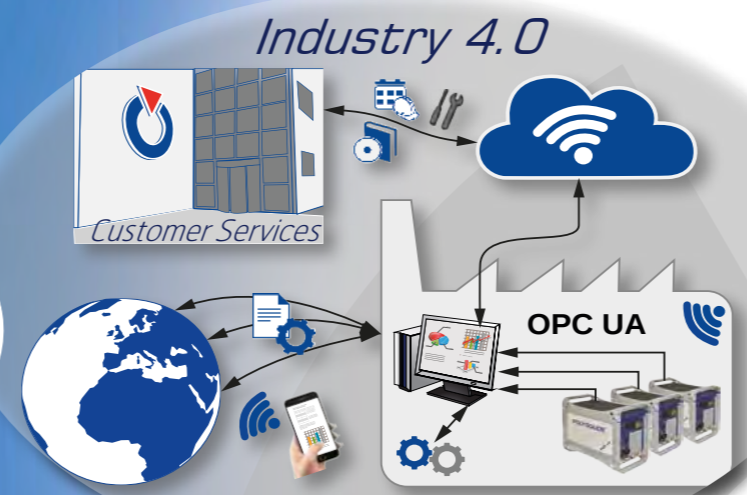
Portable power source for orbital tube welding

Compatible with all Polysoude™ welding heads and welding heads using filler wire

Advantages

- ▶ **Ergonomic design:** user-friendly, easy to operate human-machine-interface with high resolution
- ▶ **Modular design:** power source and range of accessories can be perfectly tailored to the particular applications
- ▶ **Modern and ever evolving :** ready for Industry 4.0, IoT connectivity included Remote access to welding program loading and to data retrieval
- ▶ **Economical :** due to data transfer via a fast connector ONE single touchscreen is sufficient to monitor several power sources
- ▶ **Unique level of precision:** setting and control of the welding current in steps of 1/10 Ampere
- ▶ **Robust and reliable:** particularly well suited for working on site (structurally sound, carrying bag with particular caoutchouc protection for the touchscreen)

Resulting from 50 years' experience in mastering welding technologies



General characteristics



Online programming with High Resolution touchscreen

- Ethernet compatible
- Built-in printer for welding procedure archiving and documentation
- Closed loop regulation of torch rotation and wire speed
- Welding gas control and backing gas with safety valve
- Built-in closed loop water cooling system with safety valve for welding head and torch
- Auto-range 100 - 230 V single phase ±10% compatible with field power generators



Offline & online programming with standard PC



USB memory stick for saving, loading and archiving of welding programs and monitored welding data



Full function remote control with welding program selection



Compatible with standard peripheral equipment – printer, bar code reader, oxygen indicator, etc.

Associated Welding Heads



▶ **UHP + MW Series**
Closed welding heads for TIG tube to tube welding without filler wire



▶ **MU Series**
Open welding heads for TIG tube to tube welding with filler wire



▶ **TS Series**
Open and closed welding heads for TIG tube to tubesheet welding with or without filler wire

Accessories



▶ **Polyfil Series**
External portable wire feeders with spool protection

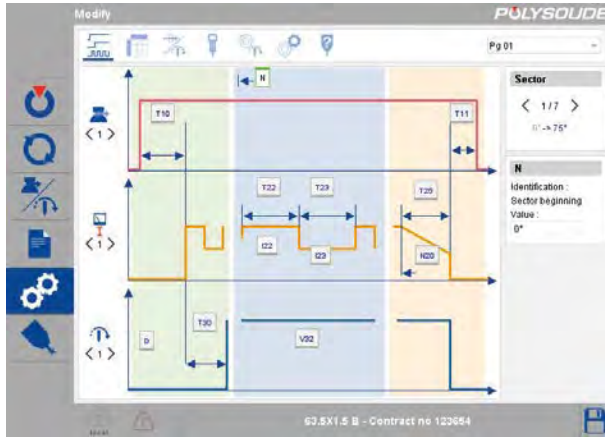


▶ **Switch box**
Alternate use of two welding heads including automatic selection of the corresponding welding programme

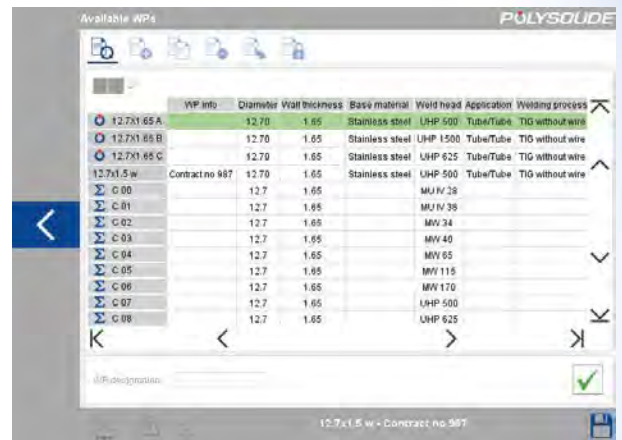
Graphical User Interface (GUI): Just follow the instructions!

► Intuitive graphical interface

With multilingual “Help” menu for optimised welding programs



► Synergic mode auto-programming



They trust us

Our customers are our best references



Technical specifications

Welding method	TIG - DC, constant or pulsed, with or without filler wire
Input power (Auto-range)	Single phase 100 V / 115 V / 200 V / 230 V \pm 10% - 50 / 60 Hz
Open circuit voltage	< 113 V
Insulation class	H
Protection class	IP 23 S
Welding current standard (steps of 1 A)	Range 170 A: 3 to 170 A (200 V / 230 V) 3 to 130 A (100 V / 115 V)
High precision (steps of 1/10 A)	Range 50 A: 3 to 50 A (100 V / 230 V)
Welding current precision	\pm 1 A when $I \leq 100$ A and \pm 1% when $I > 100$ A
Duty cycle	170 A / 25% at 230 V • 130 A / 40% at 115 V 110 A / 100% at 230 V • 100 A / 100% at 115 V
Motion controls	Torch rotation: constant or pulsed Wire feeder: constant or pulsed / automatic wire retract
Shielding gas control	Welding gas, backing gas with flow safety valve
Power source cooling	Forced ventilation
Welding torch cooling	Built-in closed loop water cooling system with flow safety valve
Display / recording (non-volatile) of real values during welding	Arc Voltage, welding current, electrode position in angular degrees, welding speed and wire speed
Welding program storage / transfer	Hard disc / USB memory stick
Dimensions L x W x H	630 x 320 x 500 mm
Net weight	29 kg
Standards	EN 60974-1 / EN 60974-10

Options and accessories

- 10,4" quick release colour touchscreen with graphical, intuitive and multilingual software
- Laptop
- Control kit for closed welding heads fitted with tachometer or welding heads other than POLYSOUDE™
- Full function remote control
- Wire feeder control
- Manual tack welding kit including water-cooled TIG torch
- Extension cable (15 m) for welding heads
- Kit for backing gas
- Dual welding head switch box
- Equipment trolley with gas cylinder support

POLYSOUDE : Related services

► Guidance and technical support

A welding application specialist in your area will advise you on the welding process and appropriate equipment for your application.

► Commissioning / Training

A complete training program will enable you to start using the equipment immediately and in the best way possible.

► Maintenance / Repair

Maintenance and repair operations can be carried out at the Polysoude plant as well as on site by our service network.

► Rental service

Increase the flexibility of your production! A large range of equipment is available for rental from our hire fleet.

Your partners worldwide

ARGENTINA

POLYSOUDE S.A.S.
☎ +33 (0) 2 40 68 11 00
info@polysoude.com

AUSTRALIA

POLYSOUDE S.A.S.
☎ +33 (0) 2 40 68 11 00
info@polysoude.com

AUSTRIA

POLYSOUDE AUSTRIA GmbH
☎ +43 (0) 3613 200 36
austria@polysoude.at

BAHRAIN

SALWO TRADING Ltd.
☎ +971 (0) 48 81 05 91
salwo@emirates.net.ae

BELGIUM

POLYSOUDE BENELUX
☎ +31 (0) 653 84 23 36
k.meurs@polysoude.com

POLYSOUDE BENELUX (SERVICE)

☎ +31 (0) 653 38 85 58
h.milder@polysoude.com

BRAZIL

AJADE COMÉRCIO INSTALAÇÕES E SERVIÇOS Ltda.
☎ +55 (0) 11 4524 3898
fernando@ajade.com.br

BULGARIA

KARWELD EOOD
☎ +359 (0) 29 73 32 15
Karweld@bg400.bg

CANADA

MAG Tool – West
EDMONTON - ALBERTA
☎ +1 800 661 9983
magtool@magtool.com

MAG Tool – East

TORONTO - ONTARIO
☎ +1 905 699 - 5016
ray@magtool.com

CHINA

POLYSOUDE SHANGHAI CO. Ltd
☎ +86 (0) 21 64 09 78 26
jm.pan@polysoude.com.cn

CROATIA

EUROARC D.O.O.
☎ +385 (0) 1 2 40 60 77
euroarc@euroarc.hr

CZECH REPUBLIC

POLYSOUDE CZ
☎ +420 602 60 28 55
m.matousek@polysoude.cz

DENMARK

HALL & CO. INDUSTRI
☎ +45 (0) 39 56 06 76
p.lorenzen@polysoude.com

EGYPT

POLYSOUDE UK
☎ +44 (0) 1942 820 935
info@polysoude.com

ESTONIA

POLYSOUDE S.A.S.
☎ +33 (0) 2 40 68 11 00
info@polysoude.com

FINLAND

SUOMEN TEKNOHAUS OY
☎ +358 (0) 927 47 2 10
info@teknohaus.fi

FRANCE

POLYSOUDE S.A.S.
☎ +33 (0) 2 40 68 11 00
info@polysoude.com

GERMANY

POLYSOUDE DEUTSCHLAND GmbH DUSSELINGEN
☎ +49 (0) 7072 60076 0
info@polysoude.de

GREECE

POLYSOUDE S.A.S.
☎ +33 (0) 2 40 68 11 00
info@polysoude.com

JAPAN

GMT CO Ltd – KAWASAKI
☎ +81 (0) 44 222 6751
gmt@e-gmt.co.jp

GMT CO Ltd – OSAKA

☎ +81 (0) 798 35 6751
gmt.kansai@e-gmt.co.jp

JORDAN

POLYSOUDE UK
☎ +44 (0) 1942 820 935
info@polysoude.com

KUWAIT

SALWO TRADING Ltd.
☎ +971 (0) 48 81 05 91
salwo@emirates.net.ae

LATVIA

POLYSOUDE S.A.S.
☎ +33 (0) 2 40 68 11 00
info@polysoude.com

OMAN

SALWO TRADING Ltd.
☎ +971 (0) 48 81 05 91
salwo@emirates.net.ae

PAKISTAN

POLYSOUDE S.A.S.
☎ +33 (0) 2 40 68 11 00
info@polysoude.com

PHILIPPINES

POLYSOUDE S.A.S.
☎ +33 (0) 2 40 68 11 00
info@polysoude.com

POLAND

UNIDAWELD – BEDZIN
☎ +48 (0) 32 267 05 54
dariusz.szota@unidaweld.pl

SUPRA ELCO

☎ +48 500 004 804
jacek.szulc@supraelco.waw.p

SINGAPORE

POLYSOUDE SINGAPORE OFFICE
☎ +65 0734 8452
Jmpan@singnet.com.sg

SLOVAKIA

POLYSOUDE CZ
☎ +420 602 60 28 55
m.matousek@polysoude.cz

SOUTH AFRICA

CHEMIKO S.A.S.
☎ +33 (0) 2 40 68 11 00
info@polysoude.com

SOUTH KOREA

CHEMIKO CO Ltd
☎ +82 (0) 2 567 5336
chemiko@chemiko.net

SPAIN

POLYSOUDE IBERIA OFFICE
☎ +34 609 154 683
la.deandres@polysoude.com

SWEDEN

HALL & CO. INDUSTRI
☎ +45 (0) 39 56 06 76
p.lorenzen@polysoude.com

SWITZERLAND

POLYSOUDE (SWITZERLAND) Inc.
☎ +41 (0) 43 243 50 80
contact@polysoude.ch

TAIWAN R.O.C.

FIRST ELITE ENT. CO. Ltd
☎ +886 (0) 287 97 88 99
auto.pipe@msa.hinet.net

THAILAND

POLYSOUDE S.A.S.
☎ +33 (0) 2 40 68 11 00
info@polysoude.com

TURKEY

EGE MAKINE
☎ +90 (0) 212 237 36 00
onurakin@egemakina.com.tr

UNITED ARAB EMIRATES

SALWO TRADING Ltd.
☎ +971 (0) 48 81 05 91
salwo@emirates.net.ae

UNITED KINGDOM

POLYSOUDE UK
☎ +44 (0) 1942 820 935
admin.uk@polysoude.com

UKRAINE

POLYSOUDE RUSSIA
☎ +7 (0) 495 564 86 81
polysoude@co.ru

UNITED STATES

ASTRO ARC POLYSOUDE Inc.
☎ +1818 (859) 7600
sales@astroarc.com

VENEZUELA

ENRIVA C.A.
☎ +58 (0) 412 34 82 602
enriva@gmail.com

VIETNAM

ANH DUONG IT Ltd
☎ +84 22 159 532
an@anhduongco.com



HUNGARY

POLYWELD Kft.
☎ +36 (0) 20 29 88 708
polyweld@polyweld.hu

INDIA

POLYSOUDE INDIA
☎ +91 (0) 20 271 27 678
ab.kulkarni@polysoude.in

INDONESIA

POLYSOUDE SINGAPORE OFFICE
☎ +65 0734 8452
Jmpan@singnet.com.sg

IRAN

STD CO
☎ +98 21 88525206-7
najco_ir@hotmail.com

ISRAEL

POLYSOUDE S.A.S.
☎ +33 (0) 2 40 68 11 00
info@polysoude.com

ITALY

POLYSOUDE ITALIA SRL
☎ +39 02 93 79 90 94
info@polysoude.it

LITHUANIA

POLYSOUDE S.A.S.
☎ +33 (0) 2 40 68 11 00
info@polysoude.com

MALAYSIA

POLYSOUDE SINGAPORE OFFICE
☎ +65 0734 8452
Jmpan@singnet.com.sg

NETHERLANDS

POLYSOUDE BENELUX
☎ +31 (0) 653 84 23 36
k.meurs@polysoude.com

POLYSOUDE BENELUX (SERVICE)

☎ +31 (0) 653 38 85 58
h.milder@polysoude.com

NEW ZEALAND

POLYSOUDE S.A.S.
☎ +33 (0) 2 40 68 11 00
info@polysoude.com

NORWAY

TEMA NORGE AS
☎ +47 (0) 51 69 25 00
tema@tema-norge.no

PORTUGAL

POLYSOUDE IBERIA OFFICE
☎ +34 609 154 683
la.deandres@polysoude.com

QATAR

SALWO TRADING Ltd.
☎ +971 (0) 48 81 05 91
salwo@emirates.net.ae

REPUBLIC OF IRELAND

POLYSOUDE UK
☎ +44 (0) 1942 820 935
admin.uk@polysoude.com

ROMANIA

DEBISUD CONCEPT S.R.L.
☎ +40 (0) 255 21 57 85
office@debisud.ro

RUSSIA + C.I.S.

POLYSOUDE RUSSIA
☎ +7 495 564 86 81
info@polysoude.ru

SAUDI ARABIA

SALWO TRADING Ltd.
☎ +971 (0) 48 81 05 91
salwo@emirates.net.ae

Find us on



Polysoude S.A.S.

Z.I. du Bois Briand • 2 rue Paul Beaupère
F - 44300 NANTES

☎ +33 (0) 2 40 68 11 00 • 📠 + 33 (0) 2 40 68 11 88

🌐 www.polysoude.com • 📧 info@polysoude.com

A Member of



POLYSOUDE
THE ART OF WELDING