

SIDEROS

 **ENGINEERING**



DUST COLLECTORS
FOR CUTTING AND WELDING



DOWNDRAFT TABLES AND AUTOMATION
FOR CUTTING MACHINES



MATERIAL STORAGE
FOR SHEET METAL, TUBES AND BARS



3 AXIS WELDING POSITIONERS
FOR WELDING AND ASSEMBLY



HEAD AND TAILSTOCK POSITIONERS
FOR WELDING AND ASSEMBLY



STRAIGHTENING PRESSES
FOR STEEL PLATES



DEBURRING TUMBLERS
FOR OXY AND PLASMA

 **ENGINEERED
AND MANUFACTURED
IN ITALY**

www.siderosengineering.com

EN



SIDEROS ENGINEERING has been operating for over 35 years worldwide in the field of machinery for plate fabrication, and it owes its success particularly to the high quality of its own products and to its constant commitment to R&D, innovation and industrialization of new products. Founded in 1981, Sideros Engineering has developed an enviable competitive advantage: the possibility of testing all new prototypes and the new technologies for a period of at least one year at BELLONI LAMIERE, a steel service center and fabrication shop operating since 1958, belonging to the same Industrial Group; this combination enables SIDEROS ENGINEERING to constantly monitor the machines installed, thus allowing the optimization of products before their launch on the market and their subsequent industrialization. It is important to emphasize that Sideros Engineering is the only company in the world able to propose a wide range of complementary equipment to welding and cutting machines.

www.siderosengineering.com



SIDEROS MACHINERY is the new automation division of Sideros Engineering: born in 2019, aimed to give more importance and focus to automation applied to the Sideros Engineering products, in particular on cutting and welding applications.

Technology and innovation of our machines are now developed by a new and young division, which can take advantage of great experience and knowledge developed in 40 years in Sideros Engineering.

 ENGINEERED
AND MANUFACTURED
IN ITALY





BELLONI LAMIERE, founded by Vincenzo Belloni in 1958, has been among the first companies in Italy supplying high quality oxy-fuel cut and machined parts. Today, after over “half a century” is among the few companies in Italy that can be proud of such a long presence and experience in metal plates processing industry. The quality of the products supplied, the accuracy of inspections during the working processes, and the punctuality make BELLONI LAMIERE a reliable benchmark at the European level.

Over the years Belloni Lamiere has specialized more and more in the following processes:

- Oxy-fuel cutting: metal plates of several thicknesses are cut by high performance cutting machines
 - Straightening: equipped with 3 Hydraulic Presses with movable vertical rods, movable cylinders and rotating hammer.
- Other services:
- Milling: it is performed by a 12 mt CNC control milling machine
 - Sandblasting, deburring, heat treatments and machining.



Today BELLONI LAMIERE has become the main Test and demo Center of Sideros Engineering. Every year, Sideros tests and develops dozens of new products and technologies directly on-site. This great experience has led Sideros to design and manufacture reliable and technological advanced products over the past 35 years.

www.bellonilamiere.com



LOTUS was founded in 1980 and it is specialized in aluminium and stainless-steel fabrication. The products manufactured by Lotus are distributed and appreciated all over the world, thanks to their high-quality standards and design technical features. The main products include:

- Aluminium loading ramps
- Aluminium and stainless-steel walkways, stairs and platforms
- Aluminium and Stainless Steel structures



www.lotusalluminio.com

CARTRIDGE DUST COLLECTORS

ECOLINE



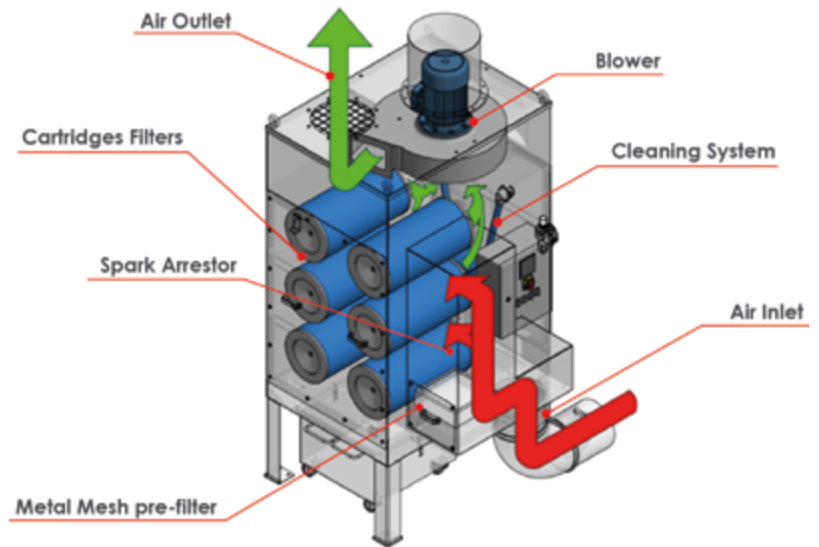
The Sideros Engineering dust collectors have marked a significant turn in the industrial filtration, thanks to their high performances, compactness and technology applied to the units. SIDEROS ENGINEERING has been the first company in the world to introduce a new philosophy in dust collectors design, integrating in one unit the motor fan, the filters and the spark arrestor. ECOLINE cartridge dust collectors belong to the category of absolute filters, guaranteeing a post-filtration level of dust emissions $<1\text{mg}/\text{m}^3$, even in the presence of extremely fine particles. Once the air has been filtered, it can be released directly into the workplace. Sideros dust collectors can be used for dusts and fumes generated by: thermal cutting, welding, deburring, grinding and polishing.

MODELS

		ECO 2 C	ECO 2 V	ECO 4	ECO 6	ECO 9	ECO 12	ECO 16	ECO 24
CARTRIDGES	N°	2	2	4	6	9	12	16	24
SURFACE	m ²	42	42	84	126	189	252	336	504
AIRFLOW	m ³ /h	1800	1500/2000	2400/3600	3600/5400	5400/8100	7200/10000	9600/12000	11000/15000
VALVES	N°	2 1"	2 1"	4 1"	6 1"	9 1"	12 1"	16 1"	12 2"
HEIGHT	mm	1200	2100	2200	2600	3270	3700	3800	4000
DEPTH	mm	1500	1100	1320	1420	1620	1620	1800	2400
WIDTH	mm	800	750	1250	1300	1950	1950	2300	2500
WEIGHT	Kg	320	450	610	750	1300	1500	1700	2380

ADVANTAGES

- High performances and efficiency
- Robustness of the unit
- Compact and fully welded
- Automatic cleaning of the filters
- Low energy consumption
- Filtration class: M
- Filtration efficiency: with particulate 0.3 micron at 99.997%
- Low maintenance costs
- Fire protections (Metallic pre-filter and spark arrestor)



ECO AMBIENT

The ECO AMBIENT environmental filtration system, uniformly purifies the air of a workplace releasing perfectly breathable and purified air. The Ambient dust collectors are developed to purify the air in presence of dust produced by welding, grinding, deburring and thermal cutting processes. Thanks to their filtration efficiency, which is higher than 99,997 % (up to 0,3 micron) and due to TOP GRADE cartridge filters, the Ambient dust collector ensures a safe and clean working environment.

MODELS

- ECO 4 Ambient: 5.000 m³/h - Filtering surface 84 m²
- ECO 6 Ambient: 7.500 m³/h - Filtering surface 126 m²
- ECO 9 Ambient: 10.000 m³/h - Filtering surface 189 m²

ADVANTAGES

- Healthier workplace
- Higher workers' productivity
- Cleaner working environment
- Reduced heating costs due to the air circulation inside the working whop
- No air ducts required
- Plug and Play unit
- Compact unit



DUST COLLECTORS FOR ALUMINIUM

DUST COLLECTORS FOR ALUMINIUM

The Aluminium dust, in a particular concentration, or if in contact with an ignition source (i.e.: sparks, flames or electrical discharges) might catch on fire or explode. The Reinforced dust collectors are designed to reduce the effects of hypothetical explosions inside the unit, in presence of aluminium dust or chips involved in the process.

The main features are:

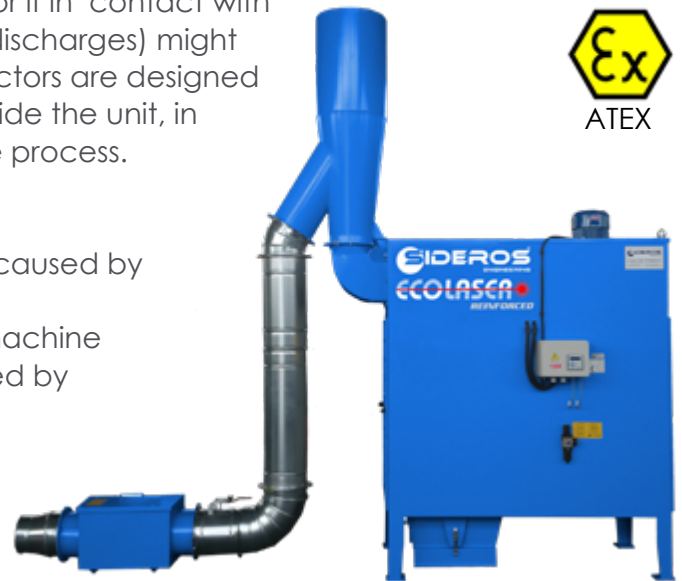
- Reinforced structure with thicker steel plates
- Calibrated pressure relief vents for overpressures caused by explosions
- Air diverters to avoid explosions go back to the machine
- All ATEX components to prevent explosions caused by aluminium dust or chips
- ATEX Complied Unit

APPLICATIONS

- Aluminium alloys and titanium processing
- Laser cutting
- Plasma cutting
- Grinding
- Welding
- Smoothing
- Deburring

ADVANTAGES:

- Workplace safety
- Pressure relief vents
- Reinforced structure
- ATEX complied
- ATEX components
- Air diverter to avoid explosions go back to the machine



CaCO₃ GRAVIMETRIC DISPENSERS

The calcium carbonate gravimetric dispenser has been designed to prevent and reduce the risk of explosions inside the dust collector or in the connecting pipes, during the processing of aluminium dusts. The GRAVIMETRIC DISPENSER is installed on the pipe run upstream the dust collector.

ADVANTAGES

- Workplace safety
- Quick installation
- No maintenance costs
- Applicable to any type of dust collector
- Tailored scheduling
- Minimum footprint
- Can be turned on when necessary

APPLICATIONS:

- Laser cutting
- Plasma cutting
- Welding
- Deburring



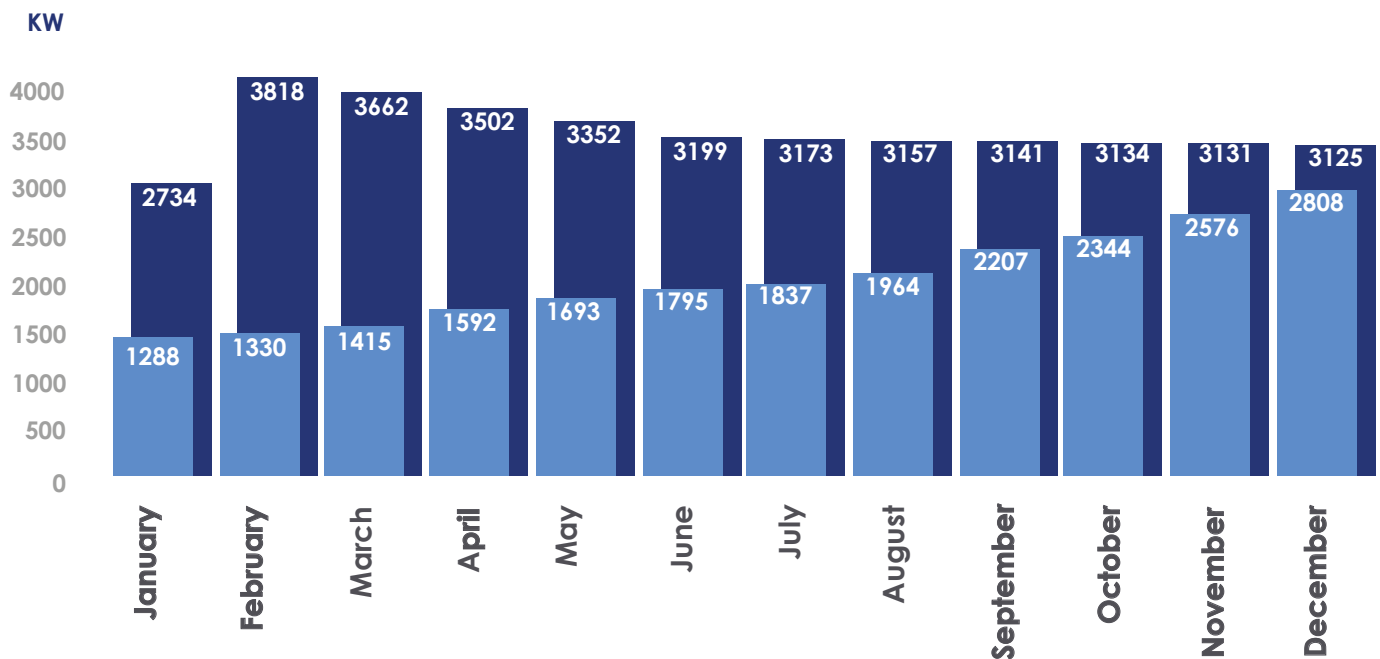


ENERGY SAVING SYSTEMS

To meet the increasing demand of machines with low energy consumption and reduced environmental impact, Sideros Engineering has introduced ECOTECH Eco-Mode System. ECOTECH is a PLC and a Touch Screen Based system, which continuously adjusts and controls the number of rpm of the fan motor according to the clogging of the filters as well as monitoring the general operation state of the dust collector, even remotely.



POWER INPUT - Analysis carried out on a ECO 6 HC/S with 7,5 kw motor



ANNUAL CONSUMPTION:



ECOTECH KW 22.849



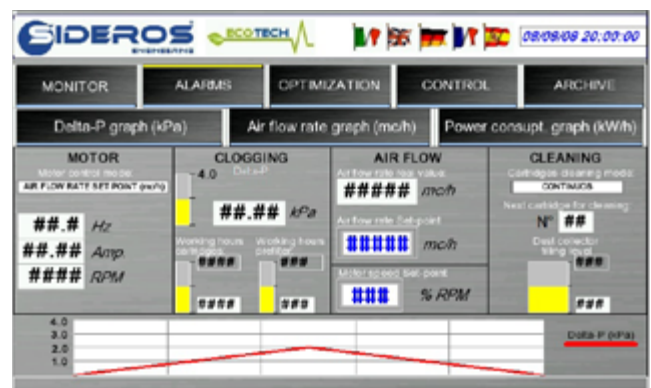
STANDARD KW 39.128

Return on investment (ROI) : 7 months

Annual energy saving of about € 3.288 (0.19€ Kw)

FEATURES AND ADVANTAGES

- Electric energy saving up to 60%
- Noise reduction up to 40%
- Longer life of cartridge filters
- Mechanical wear reduction up to 40%
- Heating costs reduction
- Air flow self-adjustment depending on the filters clogging
- On-board control through colour LCD Touch screen panel
- Remote monitoring in real time of all parameters
- Wi-Fi connectivity



ACCESSORIES

FASTCLEAN: DUST SCREW CONVEYOR

FASTCLEAN is an automatic screw conveyor for the extraction of dust from the discharge hopper of the dust collector to a drum or a big bag.



FLEXIBLE SCREW CONVEYOR WITH COLLECTING DRUM 200 L (52 Gal)



FLEXIBLE SCREW CONVEYOR WITH BIG BAG 1.000 L (264 Gal)

HIGH CAPACITY DISCHARGING SYSTEMS



DRUM RAISED DISCHARGE 200 L (52 Gal)



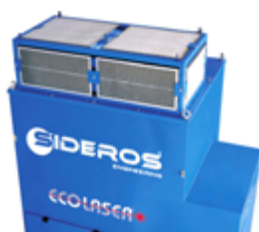
BIG BAG RAISED DISCHARGE 1000 L (264 Gal)



PRE CYCLONE Pre-separator

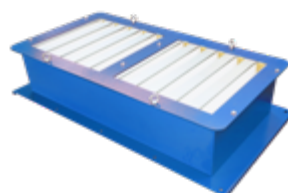
ACTIVE CARBON BOX

Recommended for applications with the presence of oxides, gas and odorous substances.



HEPA FILTER

Absolute filtration. Recommended for indoor application.

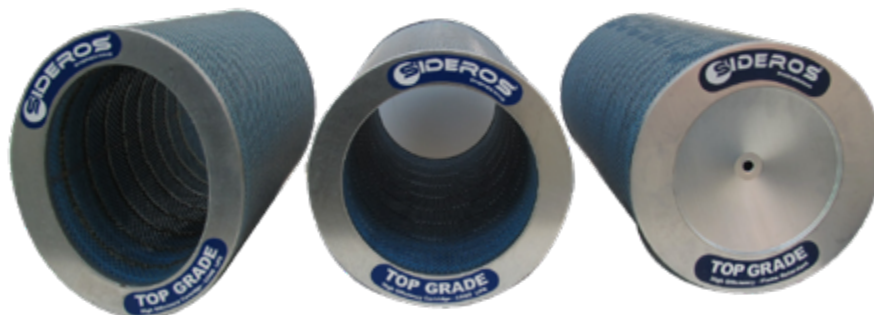


SPARK ARRESTOR

Placed on the floor between the dust collector and the machine.



TOP GRADE cartridge filters have been used on the Sideros dust collectors for over 35 years, from the portable units (ECO 2C), to the larger ones with 24 cartridges, ECO 24 CT.



ADVANTAGES

- Reduced pressure drops
- Flame retardant (flame proof)
- Longer life
- Higher filtering quality
- Possibility to release the filtered air into the workplace
- Constant performances over time
- 70% Cellulose, 30% nanofiber
- Designed for metal dust applications



	Mod. PP23 - PP15	Mod. PP26
FILTERING SURFACE	21 m ²	23.6 m ²
SIZES (ext. Ø X l.)	324 X 660	352 X 660
FILTRATION EFFICIENCY	Particulate 0.5 micron at 99.9999% Particulate 0.3 micron at 99.997%	
FILTRATION CLASS	EN 779 - F7 , BIA - M	
MAX. TEMPERATURE	65° C continuous, 80°C max. peak	
COMPOSITION	Synthetic nano-fibres on cellulose substrate	

DUST COLLECTORS

WET DUST COLLECTORS IN STAINLESS STEEL



APPLICATIONS:

Sanding, Grinding, Deburring, Polishing, Suitable for explosive dusts such Aluminum and Titanium

The ECOWET SERIES stainless steel wet dust collector has been designed to capture combustible/hazardous dusts from different applications through the power of the water filtration.

FEATURES:

- Interior Baffle Section
- Special Mist Filters
- Low Maintenance
- Electronic Water Level Control
- Stainless Steel Construction
- Automatic electronic float valve controls level of water when unit is running
- Durable corrosion resistant construction

MODELS

Model	Airflow m ³ /h	Static Pressure mm h ² o	Motor Kw
ECOWET 25	2.250	180	3
ECOWET 40	3.750	190	4
ECOWET 50	4.750	200	6
ECOWET 80	7.500	200	8
ECOWET 100	10.000	210	12

PORTABLE DUST COLLECTORS

The ECO 2C and ECO T cartridge dust collectors are designed to extract and filter fumes and dust produced by welding, grinding and manual plasma cutting. Thanks to their portability, they can be carried around the factory in different positions with maximum flexibility.

TECHNICAL DATA ECO 2C

- Airflow: 1800 m³/h
- Noise level: 72 dB
- Fan motor: 2.2 Kw

TECHNICAL DATA ECO T

- Airflow: 1300 m³/h
- Noise level: 70 dB
- Fan motor: 1.1 Kw

FILTRATION ECO 2C

- Flame retardant TOP GRADE cartridge filters
- Filtration efficiency: 99.997 % at 0.3 micron
- Total filtering surface: 42m²
- Cleaning system: automatic through compressed air.

FILTRATION ECO T

- Aluminium prefilter, class G2
- Acrylic prefilter, class G4
- HEPA filter (High Efficiency Particle Arrester), class H12
- Filtration efficiency: 99,5%, class H12



CENTRALIZED PLANTS



Centralized suction plants are seized according to existing regulatory requirements, on welding and grinding applications.

Their configuration (plant air flow and number of stations) is customized according to Customer's requirements as well as to the production lay-out. The Extraction systems can be integrated, with:

- Fixed suction arms from 3 up to 7 mt
- Movable suction arms on conduits
- Reeling drums
- Suction hoods
- Fixed welding and deburring benches
- Robot cells

Automatic pressure sensors, connected to the dust collector, optimize the electric and pneumatic consumptions of the plant according to real working requirements.

DOWNDRAFT BENCHES

The Sideros Engineering Down Draft benches have been designed heavy duty to last longer, and to let the operators work in total safety and in a health. They can be integrated to the the ECOLINE dust collectors, in order to extract smoke and dusts produced during cutting, welding and grinding processes.

ADVANTAGES

- Reduced pollution in the workplace
- Side and back wall has a dual function: extraction of smoke and the barrier against sparks
- No maintenance nor additional costs for spare parts
- Flexibility of use: side and back walls are removable, to let the possibility of placing workpieces with dimensions larger than the bench
- Dust and scrap are collected in specific collecting drawers at the bottom of the bench
- Heavy duty design to support weight up to 3600 kg (8,000 lbs)



DOWNDRAFT TABLES FOR THERMAL CUTTING

ECOTAB

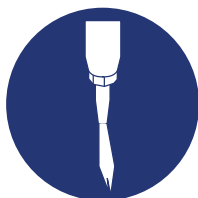


Downdraft table Sirius HD

Since the '70s, Belloni Lamiere steel service center, part of the Sideros Engineering industrial group, has tested and used the downdraft tables produced and developed by Sideros Engineering. Over the decades, Sideros Engineering downdraft tables have been optimized, automatized, and therefore produced on industrial scale for being more competitive on the local and the export market. Sideros Engineering downdraft tables feature a solid frame, able to support heavy-duty metal plates, mainly used in applications, such as oxy-fuel cutting, high power plasma and Laser cutting. Modularly and zoned designed, the Sideros downdraft tables are provided with an integrated suction system, equipped with one or more suction channels, depending on the cutting width and the application.

Sideros Engineering offers 76 down drafttables configurations, all industrialized and continuously monitored at Customers locations in order to receive constant performance feedback.

APPLICATION



OXYFUEL
CUTTING

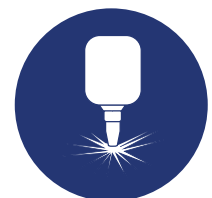
Models

Orion
Polaris



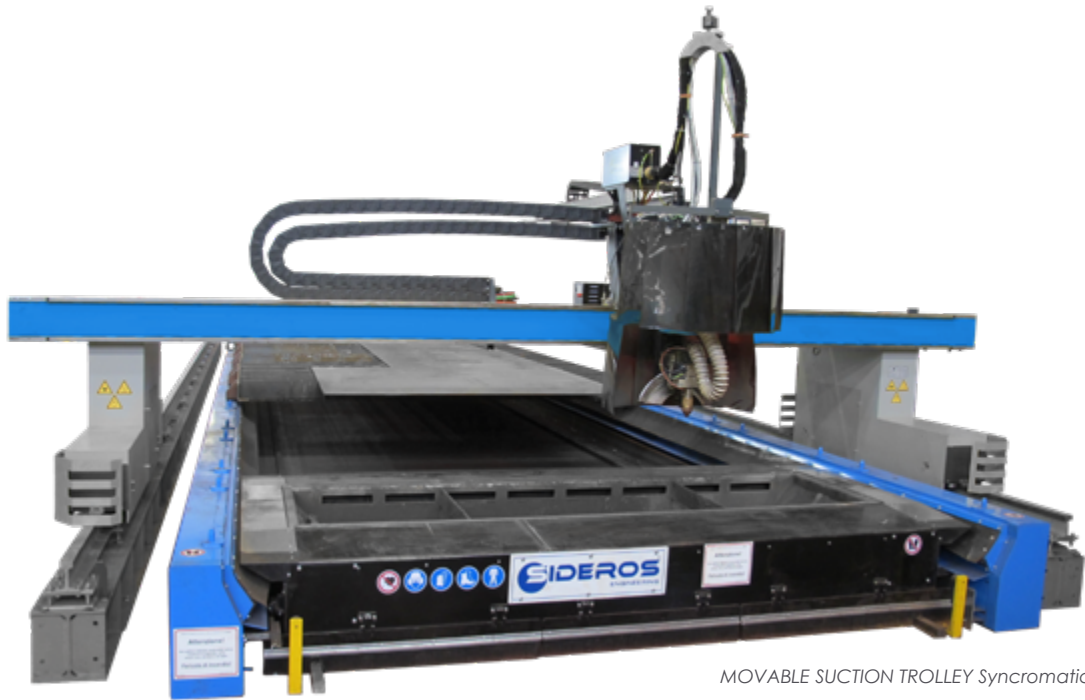
PLASMA
CUTTING

Orion
Sirius
Sirion



LASER
CUTTING

Lasertab



MOVABLE SUCTION TROLLEY Syncromatic

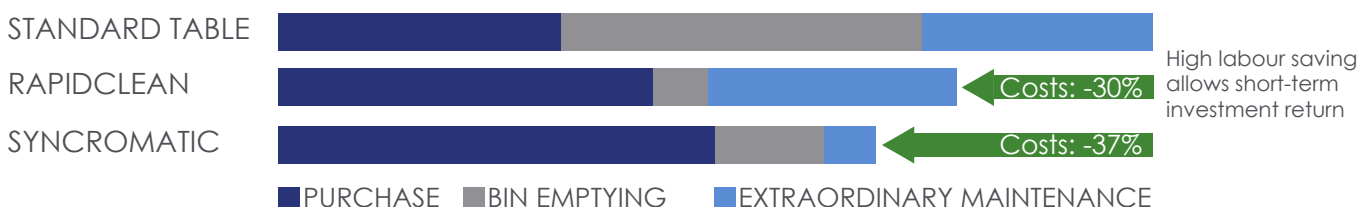
MOVABLE SUCTION BUCKETS

The latest born is the SYNCROMATIC downdraft tables. it is a revolutionary downdraft table equipped with movable bucket, which extracts fumes and dust as well as collecting the scrap and the small cut parts.

The process is automatically performed by the Synchronization of the movable bucket with the cutting machine through the use of encoders and Lasers.

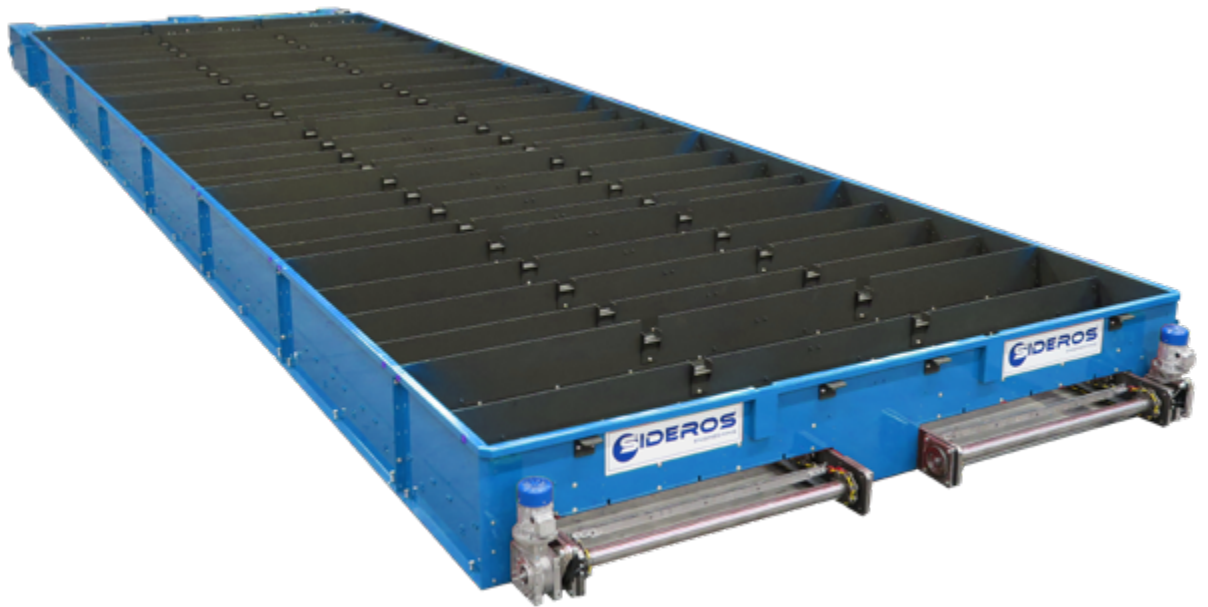
ADVANTAGES

- Very high suction efficiency
- Slag collection in only one bin
- Short slag bin emptying time
- Easy and quick to install with all cutting machine brands
- The total absence of wear parts (cylinders, valves and pneumatic pipes) drastically decreases machine downtimes caused by maintenance interventions
- Integrable with any kind of cutting technology (Plasma, Laser and Oxy-fuel)
- Heavy duty design for thicknesses up to 300 mm (12")



AUTOMATION DOWNDRAFT TABLES

RAPIDCLEAN

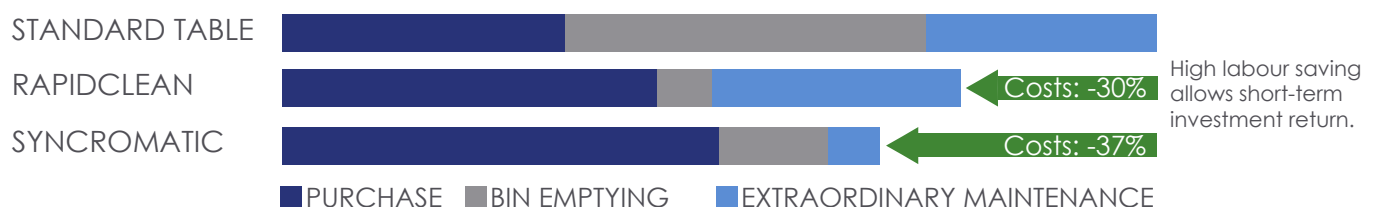


AUTOMATIC SLAG REMOVAL SYSTEMS

Perfectly integrated with the ORION and POLARIS downdraft tables, Rapidclean has been designed to automatize the cleaning process of the old downdraft tables with slag containers, performing the automatic extraction of slag produced during the cutting processes.

ADVANTAGES

- Automatic extraction of slag during the thermal cutting of plates
- It avoids expensive machine downtimes to empty the standard slag bins
- Only 1 slag bin to empty
- Abatement of maintenance and downtime costs
- Low maintenance
- Suitable for heavy duty applications
- SMOKE FREE table
- Suitable for Plasma, Laser and Oxy-fuel applications
- Single or double RAPIDCLEAN available according to table width
- Patented technology





SHUTTLE TABLES FOR CUTTING MACHINES

SPRINTER SHUTTLE TABLE has been designed to be integrated into any Laser and Plasma cutting machines requiring automation to transfer pallets from the loading/unloading bay to the main cutting area. SPRINTER can be supplied with downdraft table and enclosure. Minimum size mt 1.5 x 3 (5 x 10 ft) maximum size 4 x 15 mt (13 x 50 ft)

ADVANTAGES

- Extremely reduced transfer times of the pallets from loading/unloading bay to the cutting area
- Easy and quick integration with the cutting machine
- Possibility to include protection enclosure
- Heavy duty design for plates up to 125 mm (5 in)
- Possibility to integrate the Rapidclean slag removal system
- Possibility to process metal sheets and plates in locations without overhead cranes



WATER TABLE

ACQUAMATIC



Table with variable water level

WATER TABLES

ACQUAMATIC is a water containment table with a fixed or raised / lowered water level.

ADVANTAGES

- Total abatement of the fumes and dusts produced during the plate cutting
- Noise and light reduction
- Slag and mud collecting bins

MODELS

- Table with fixed water level
- Table with raise/lower water level (3 levels)



Table with fixed water level

SYNCROLIFT L TYPE



SYNCROLIFT L-Type with tank

The L-TYPE positioner represents the newest product developed in Sideros: it's an evolution of the standard head and tailstock positioners. It performs an optimum ergonomics for welding and assembly processes, thanks to the possibility of turning the working piece by 180 °. The positioner is composed by a fixed column and a rotating arm, performing 3 main movements: upward/downward movements, turning over and rotation by 360°. The L type positioner can also be easily customized in height, length of the arm and in load capacity up to 10.000 kg

SYNCROLIFT WITH CRADLE



SYNCROLIFT with cradle with industrial boiler

The cradle type SYNCROLIFT (2 fixed columns and a turning cradle) is equipped with a main cradle and a motorized rotary plate on which is loaded the piece. Even in this case, the positioner performs 4 main movements: upward/downward movement, turning over and rotation by 360°. Finally, the cradle type SYNCROLIFTS can also be customized in height, length of the cradle and in load capacity up to 20.000 kg.

HEAD AND TAILSTOCK WELDING POSITIONERS

SYNCROLIFT



SLC 150 With Trailer

Sideros Engineering Head & Tailstock Positioners are used to weld and assembly long and large weldments in many different application fields.

Besides the benefits of ergonomics and safety during welding and assembly applications, the revolutionary feature of Syncrolift is the compactness and the portability of both columns, thanks to their dedicated hydraulic jacks.

The result is an extreme flexibility in the factory. Syncrolift features two main axis: Electrical elevation/descent, and Electrical 360° left/right rotation.

A typical configuration is composed of a motorized headstock positioner with an idler tailstock.

ADVANTAGES

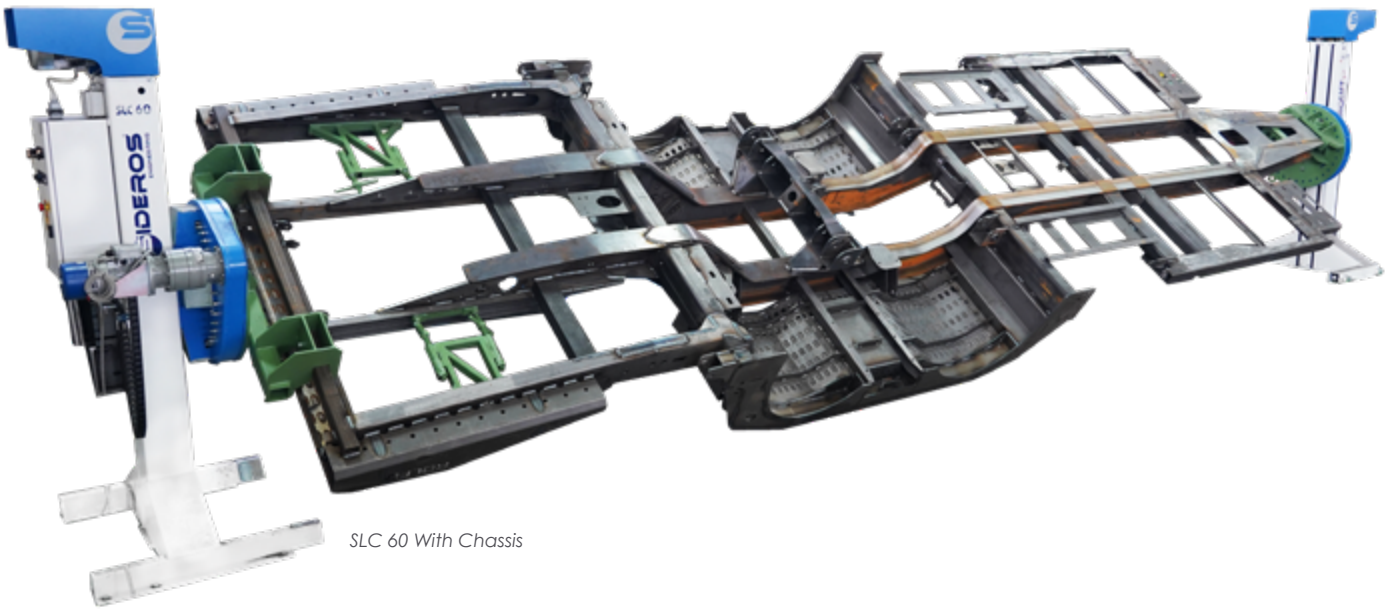
- Master and idler column with rotating mounting plates.
- Hydraulic jacks for column positioning.
- Servo-motor, ball screw and encoder control for Up & Down motion.
- Servo-motor, gear reducer and encoder control for Rotation.
- LCD display for positioning set up, safety thresholds setting and diagnostics.
- Hand held control pad.
- Automatic load levelling.
- Redundant safeties - servo motor brake, ball screw thread geometry and mechanical Stopper.
- Low maintenance.
- 240/400/480/600 Volt – 3 phase – 50/60 Hz.
- Patented design

OPTIONALS

- Foot pedal for rotation control.
 - TCS programmable control for automatic positioning with 7" touch screen.
 - Idler column on rails.
 - 400/800/1200 Amp rotary ground.
 - Double rotation torque.
 - Custom column height.
 - Custom load capacity (over 30000 kg / 66000 lbs).
- Also available**
- SLC M series – with double Rotation Torque capability
 - SLC S series – with Single Column set up

HEAD AND TAILSTOCK WELDING POSITIONERS

SYNCROLIFT



SLC 60 With Chassis

MODELS	LOADING CAPACITY (Kg)	MAX TORQUE (Nm)	MIN TABLE HEIGHT (mm)	MAX TABLE HEIGHT (Kg)
SLC 20	2.000	3.000	350	1.800
SLC 40	4.000	3.500	350	1.900
SLC 50	5.000	4.000	400	1.950
SLC 60	6.000	5.500	450	1.950
SLC 100	10.000	7.500	500	1.950
SLC 120	12.000	10.000	550	1.950
SLC 150	15.000	15.000	550	2.000
SLC 200	20.000	22.000	550	1.850
SLC 250	25.000	25.000	700	1.850
SLC 300	30.000	35.000	750	2.000

PRODUCTIVITY & PROFITS



MANUAL WELDING/ ASSEMBLY



■ WELDING DEFECTS

■ WORKING HANDLING

■ WELDING TIME

APPLICATION



Fabrication



Agriculture



Transportation



Oil and Gas



Railway



Aerospace



Defence

3 AXIS WELDING POSITIONERS

ROTOLIFT



ROTOLIFT is a three-axis hydraulic positioner and handler specifically designed for assembling and welding operations. Thanks to its functional features, the machine considerably reduces the handling of the workpiece and therefore the use of traditional lifting systems. ROTOLIFT is an ergonomic machine featuring great flexibility. Its innovative feature is the possibility not only to tilt and rotate the workpiece, but also to lift and lower it.

ADVANTAGES

- Reduction of weldments handling time
- Minor use of traditional lifting equipment
- Safer and more ergonomic working environment
- Lifting, tilting and rotation of a weldment on a single machine
- Improvement of welding quality
- Fast return on investment (ROI)
- Simplified welding procedure specifications (WPS)
- 3 axis: elevation, rotation, tilting
- Patented design

ACCESSORIES

- Rotary ground from 600 to 1500 Amp.
- Foot pedal control for L/R rotation
- Customized rotary table
- Tilting up to 140°
- TCS programmable control for automatic positioning through 7" touch screen.
- Increased rotation torque
- Customized color
- Detachable hydraulic power unit and electric board

PRODUCTIVITY & PROFITS



← COSTS: -40%



MANUAL WELDING/ ASSEMBLY

■ WELDING DEFECTS

■ WORKING HANDLING

■ WELDING TIME

3 AXIS WELDING POSITIONERS

ROTOLIFT

2 VERSIONS

HYDRAULIC: hydraulic lifting, tilting and rotation
ELECTRIC: hydraulic lifting and tilting
 Electric rotation with VFD for speed control.

LOAD CAPACITIES

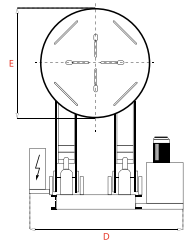
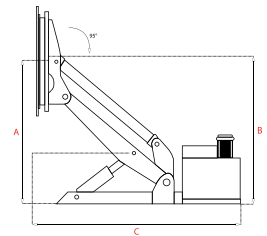
- kg 1250;
- kg 2000;
- kg 3000;
- kg 4500;
- kg 6500;
- kg 8500;
- kg 11000;
- kg 13000;

TECHNICAL FEATURES

MODELS	MAX. CAPACITY Kg	MAX. TABLE TILTING °	TILT TORQUE Nm	ROTATION TORQUE Nm	ROTATION TIME		HEIGHT WITH VERTICAL		HEIGHT WITH HORIZ. TABLE		LENGTH OVERALL C mm	WIDTH OVERALL DIMENSION D mm	TABLE DIMENSION E mm	MACHINE WEIGHT Kg
					Oleo rpm	Elett. rpm	Min mm	Max mm	Min mm	Max mm				
RL 1250	1250	95	4900	490	2	2	540	1120	700	1280	1760	1630	Ø 800	757
RL 2000	2000	95 140*	7850	1570	1.7	2	550	1300	650	1400	1850	1660	Ø 800	930
RL 3000	3000	95 140*	11750	2350	1.5	2	740	1590	720	1570	2400	1825	1100 X 1100	1477
RL 4500	4500	95 140*	21200	5300	-	1.5	830	2080	880	2130	2590	2270	1500 X 1500	2500
RL 6500	6500	95	31900	7500	-	1.5	910	2380	950	2420	3600	2410	1500 X 1500	3424
RL 8500	8500	95	41700	8000	-	1	980	2740	1180	2840	4450	2480	1500 X 1500	4360
RL 11000	11000	95	53950	10700	-	1	1100	2900	1300	3200	4900	2500	1800 X 1800	5100
RL 13000	13000	95	63750	15600	-	1	970	2710	1260	3000	4500	2500	1800 X 1800	5480
RL 18000	18000	95	88290	17651	-	1	1070	2770	1300	3000	4875	2800	1800 X 1800	6500

* Optional

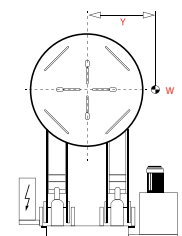
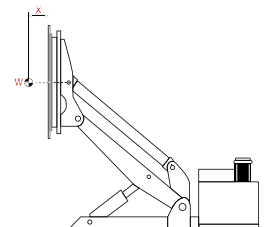
The data are indicative and subject to change without notice



ALLOWED LOADS

RL 1250	w - Kg x - mm y - mm	1250 400 40	1000 490 50	800 600 60	600 790 80	400 1160 120													
RL 2000	w - Kg x - mm y - mm	2000 400 80	1700 460 90	1400 550 100	1100 700 120	800 950 160	600 1260 210	400 1800 300											
RL 3000	w - Kg x - mm y - mm	3000 400 80	2500 530 100	2100 640 120	1700 820 160	1300 1150 230	900 2000 420	500 3300 670	300 3900 790										
RL 4500	w - Kg x - mm y - mm	4500 480 120	3900 540 140	3300 620 160	2700 740 190	2100 950 240	1500 1280 330	1200 1600 410	900 2100 540	600 3100 790	300 6100 1500								
RL 6500	w - Kg x - mm y - mm	6500 500 120	5700 560 140	4900 640 160	4100 750 180	3300 920 220	2500 1200 290	2100 1400 340	1700 1700 420	1300 2200 550	900 3100 630	500 5580 730							
RL 8500	w - Kg x - mm y - mm	8500 500 95	7500 560 110	6500 640 130	5500 750 150	4500 910 190	3500 1140 240	3000 1300 280	2500 1550 340	2000 1930 400	1500 2550 550	1000 3750 820							
RL 11000	w - Kg x - mm y - mm	11000 500 90	9800 550 110	8250 650 130	7130 750 150	5850 900 200	4550 1150 250	3950 1300 290	3150 1550 350	2500 1950 440	1800 2600 590	1210 3700 840	900 4900 900						
RL 13000	w - Kg x - mm y - mm	13000 500 120	11000 585 140	9000 710 165	7500 840 190	6000 1000 230	4500 1300 300	3500 1650 375	3000 1900 430	2500 2250 500	1800 3100 685	1200 4600 1000							
RL 18000	w - Kg x - mm y - mm	18000 500 100	15000 585 110	12000 650 130	10500 750 150	7850 900 180	6350 1150 240	5100 1300 270	9800 1550 340	2700 1950 440	1200 2600 610	700 3700 900							

The data are indicative and subject to change without notice



SHEET METAL VERTICAL STORAGE

SHEET METAL VERTICAL STORAGE



2000 mm X 6000 mm, Double Tower

Spaziomatic sheet metal Vertical storage is an automated storage and retrieval system for sheet metal. Spaziomatic features an elevator to deposit and retrieve drawers and deliver them directly to the load/unload bay at a safe working height. The load capacity per drawer can be up to 5000 kg (11,000 lbs). Thanks to its features, companies can take advantage of vertical space to save footprint and improve their material workflow. The Sideros Engineering Vertical Storage can be customized to accommodate a variety of sheets size as well as other flat material such as plywood, plastic, moulds, boxes and components.

STANDARD MODELS*

- 1.250 x 2.500 mm (4 x 8 ft)
- 1.500 x 3.000 mm (5 x 10 ft)
- 1.500 x 4.000 mm (5 x 13 ft)
- 1.500 x 6.000 mm (5 x 20 ft)
- 2.000 x 4.000 mm (6 x 13 ft)
- 2.000 x 6.000 mm (6 x 20 ft)
- 2.500 x 6.000 mm (8x 20 ft)

* Larger and longer sizes upon request

BENEFITS

- Material handling costs reduction
- Reduced storage footprint
- Efficient material storage and flow
- Increased workplace safety
- Updated inventory status
- Fast ROI
- Heavy Duty design
- User friendly Touch screen control

STANDARD CONFIGURATIONS

Single Tower with front load/unload



Single tower with front load and back unload



Double tower with shuttle with front load/unload



BARSTOCK/TUBES VERTICAL STORAGE



6500 mm X 850 mm, 6 Towers

Spaziomatic Bar Stock Vertical storage is an automated storage and retrieval system for Bar Stock, Pipes, Tubes and Profiles. Spaziomatic features an elevator to deposit and retrieve drawers and deliver them directly to the load/unload bay at a safe working height. The load capacity per drawer can be up to 5000 kg (11,000 lbs). Thanks to its features, companies can take advantage of vertical space to save footprint and to improve their material workflow. The Sideros Engineering Vertical Storage can be customized to accommodate a variety of long material as well as flat material such as moulds, boxes, spare parts, bundles and components in general.

STANDARD MODELS*

- 700 X 4,000 mm (2.3 x 13 ft)
- 900 x 4,000 mm (3 x 13 ft)
- 700 x 6,000 mm (2.3 x 20 ft)
- 900 x 6,000 mm (3 x 20 ft)
- 700 x 7,000 mm (2.3 x 23 ft)
- 900 x 7,000 mm (3 x 23 ft)

* Larger and longer sizes upon request

BENEFITS

- Material handling costs reduction
- Reduced storage footprint
- Efficient material storage and flow
- Increased workplace safety
- Updated inventory status
- Fast ROI
- Heavy Duty design
- User friendly Touch screen control

STANDARD CONFIGURATIONS

Single Tower with front load/unload



Double tower with front load/unload



4 tower systems with shuttle and front load/unload



DEBURRING TUMBLERS

ROTOCLEAN



Compact, safe and efficient, **ROTOCLEAN** allows a quick and low cost removal of slag, burr, calamine and rust from oxy-fuel, plasma cut parts in safety and ergonomics. Rotoclean replaces traditional, expensive and dangerous manual grinding operations. Equipped with a safety enclosure, which totally embeds the rotary drum, it preserves the operator from any hazardous contact with the machine. The vulcanized rubber applied inside the drum and the safety protection contribute to considerably reduce the noise produced during the processing of work pieces. The access door to the drum is equipped with hydraulic cylinders, which make its opening quick and safe.

ADVANTAGES

- High productivity
- Low operation costs
- Noise reduction
- Heavy Duty
- Safe in use
- No maintenance
- Certified quality

ACCESSORIES

- Enclosure, for the reduction of the noise level.
- Dust collector to exhaust the smoke and the dust produced inside the tumbler

ROTOCLEAN 550		
HEIGHT	mm	1.600
WIDTH	mm	2.800
LENGHT	mm	1.330
POWER	kw	3
WEIGHT	kg	1.650
MAX. CAPACITY	kg	1.000
MAXIMUM SIZE PIECES	mm	1.000 X 350

MODELS

- **Standard**
- **Pro:** for a better finish, for Plasma or Laser Cutting, VFD inverter for speed adjustment and cast iron pyramids as cleaning media.



MANUAL
GRINDING



High labour **saving** allows **short-term investment return**



Sideros **PME hydraulic press** features an extremely robust and sturdy basement, portal frame, and cylinder to guarantee an excellent reliability and performance on heavy duty cycles. It has been designed to straighten metal plates, Oxy-fuel and Plasma cut parts and metal structures.

MAIN COMPONENTS

- **Structure:** in high quality steel, fully-welded, composed of movable portal frame and basement
- **Hydraulic cylinder:** made of highly resistant and very thick steel
- **Cylinder supporting trolley:** applied to the vertical rod beam, it enables the transversal movement of the cylinder
- **Movable vertical rod:** the movement of the movable vertical rod is driven by two sturdy self- blocking motor-reducers.
- **Hydraulic system and power unit:** all hydraulic components are carefully selected among the best international brands
- **Control panel:** ergonomically positioned, it controls all press functions

APPLICATION

- Straightening of Oxy-Fuel and Plasma cut parts
- Straightening of metal structures

WORK POWER	WORKING AREA	AVAILABLE ACCESSORIES
250 ton 500 ton	mt 4 x 2 mt 5 x 2,5	Cylinders, integrated in the basement, to lift and turn upside down the parts to be processed.

REFERENCES

CLAAS

AGCO
Your Agriculture Company

AIRBUS

ALSTOM

AREVA

BOSCH

CAT

CNH

EADS
DEFENCE
& SECURITY

FINCANTIERI

GENERAL ATOMICS
AERONAUTICAL

GENERAL DYNAMICS

General Electric

Hoval

JOHN DEERE

KOMATSU

KRONES

LIEBHERR

Navantia

GENERAL DYNAMICS
Bath Iron Works

RATP

Rexroth
Bosch Group

RIELLO

ROLLS ROYCE

Eni Saipem
GROUP

SIEMENS

Solar Turbines
A Caterpillar Company

stx France

ThyssenKrupp

TOYOTA
MATERIAL HANDLING

TRAIL KING industries

BMW

The added value of our products includes a full and efficient after-sale service support supplied by highly qualified internal personnel able to propose the best solutions even for the most exigent customers



ON LINE SUPPORT: for troubleshooting and machines diagnostics



REMOTE DIAGNOSTICS: Tele-assistance support can considerably reduce intervention times in the event of failures or malfunctioning



SOFTWARE UPGRADE: Our Software department releases frequently software upgrades to improve the performances of our machines

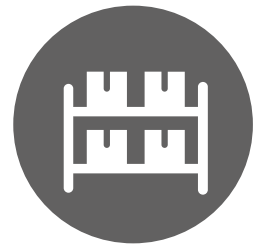
SCHEDULED MAINTENANCE

It is carried out within 24/48 hours by our specialized technicians according to the type of machine and the customer's needs. Sideros proposes preventive maintenance aimed to maintain the machines in the best operative and efficient conditions.



SPARE PARTS STOCK

Spare parts are always in stock and ready to be shipped to our customers for all Sideros products. They are available for immediate needs for parts failure or for ordinary maintenance. Spare parts are always available at our Headquarter and at our Chicago branch.



TRAINING COURSES

Training classes are regularly organized in Sideros and at customer locations. They are dedicated to plants managers, maintenance managers, machine operators, sales force including our distributors and representatives in order to make them more responsive to the problems and to the customer technical requirements. Training courses include theoretical lectures in class through multimedia material, and tours in the production facility and demo center.



TRAINING COURSES HELP TO:

- Minimize machines downtime
- Identify malfunctioning quicker
- Increase production yield
- Optimize investments yield
- Ensure a longer life of machines
- Reduce production costs



SIDEROS AMERICA

5519 N. Cumberland Ave., Suite 1003 IL
60656-2966 Chicago - USA
☎ +1 6302081839 ✉ info@siderosamerica.com



SIDEROS ENGINEERING

Via 1° Maggio, 69, 29027 ITALY
☎ +39 0523 524066
✉ info@siderosengineering.com



GERMANY SALES OFFICE

78126 Königsfeld/Neuhausen - Germany
☎ +39 0523 524066
✉ verkauf@siderosengineering.com



www.siderosengineering.com